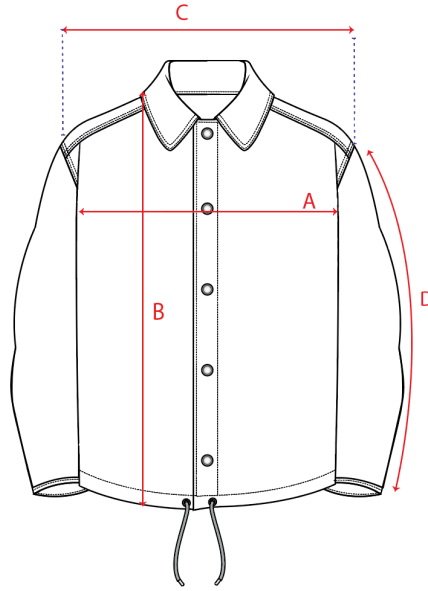


# Jacket Sizing Chart



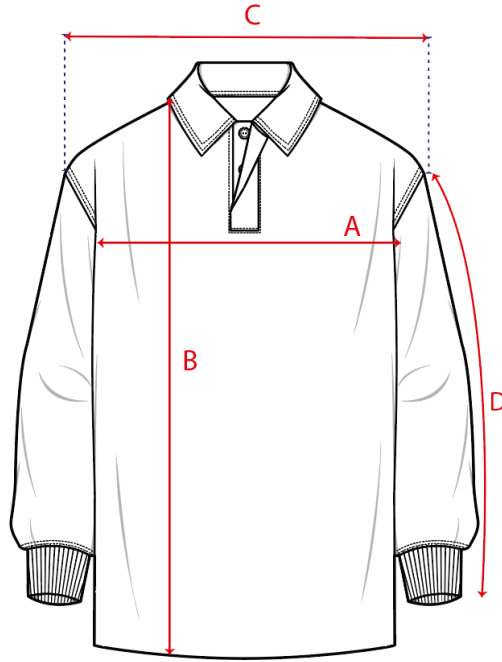
Inches

Ref	Measurements	XS	S	M	L	XL	2X	3X	4X	5X
<b>A</b>	Front Chest: The width at the chest, measure from underarm point to underarm point across the front.	21.7	22.6	23.6	24.6	25.6	26.6	27.6	28.5	29.5
<b>B</b>	Front Length: The vertical length of the garment, starting from the highest shoulder point, to the bottom of the hem.	26.8	27.6	28.3	29.1	29.9	30.7	31.5	32.3	33.1
<b>C</b>	Across shoulder: The distance between the shoulder seams measured straight across the front.	18.9	19.4	20.0	20.6	21.1	21.7	22.2	22.8	23.3
<b>D</b>	Sleeve length: The total length from the shoulder seam to the start of the cuff.	22.0	22.4	22.8	23.2	23.6	24.0	24.4	24.8	25.2

Centimeters

Ref	Measurements	XS	S	M	L	XL	2X	3X	4X	5X
<b>A</b>	Front Chest: The width at the chest, measure from underarm point to underarm point across the front.	55	57.5	60	62.5	65	67.5	70	72.5	75
<b>B</b>	Front Length: The vertical length of the garment, starting from the highest shoulder point, to the bottom of the hem.	68	70	72	74	76	78	80	82	84
<b>C</b>	Across shoulder: The distance between the shoulder seams measured straight across the front.	48	49.4	50.8	52.2	53.6	55	56.4	57.8	59.2
<b>D</b>	Sleeve length: The total length from the shoulder seam to the start of the cuff.	56	57	58	59	60	61	62	63	64

# Long Sleeve Sizing Chart



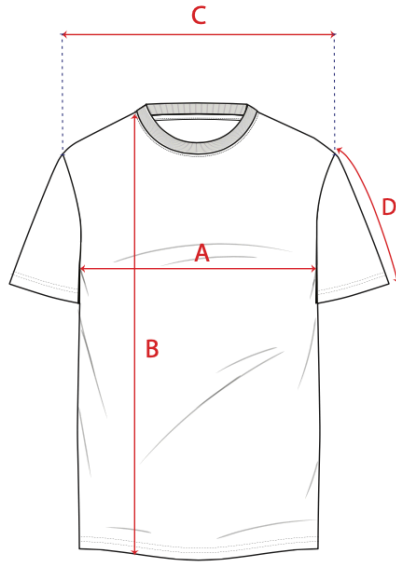
Inches

Ref	Measurements	XS	S	M	L	XL	2X	3X	4X	5X
<b>A</b>	Front Chest: The width at the chest, measure from underarm point to underarm point across the front.	21.3	22.2	23.2	24.5	25.8	27.1	28.4	29.7	31.0
<b>B</b>	Front Length: The vertical length of the garment, starting from the highest shoulder point, to the bottom of the hem.	27.6	28.5	29.3	30.2	31.1	31.9	32.8	33.7	34.5
<b>C</b>	Across shoulder: The distance between the shoulder seams measured straight across the front.	20.3	20.7	21.2	21.8	22.6	23.4	24.4	25.4	26.3
<b>D</b>	Sleeve length: The total length from the shoulder seam to the end of the sleeve	24.6	24.9	25.2	25.2	25.2	25.9	26.3	26.7	27.0

Centimeters

Ref	Measurements	XS	S	M	L	XL	2X	3X	4X	5X
<b>A</b>	Front Chest: The width at the chest, measure from underarm point to underarm point across the front.	54	56.5	59	62.3	65.6	68.9	72.2	75.5	78.8
<b>B</b>	Front Length: The vertical length of the garment, starting from the highest shoulder point, to the bottom of the hem.	70.1	72.3	74.5	76.7	78.9	81.1	83.3	85.5	87.7
<b>C</b>	Across shoulder: The distance between the shoulder seams measured straight across the front.	51.5	52.7	53.9	55.4	57.4	59.4	61.9	64.4	66.9
<b>D</b>	Sleeve length: The total length from the shoulder seam to the start of the cuff.	62.6	63.3	64	64	64.7	65.7	66.7	67.7	68.7

# Tee Sizing Chart



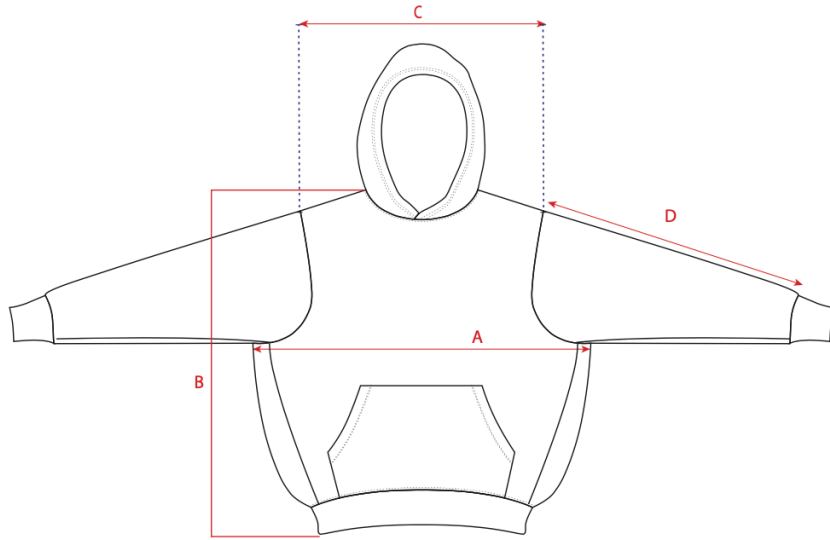
## Inches

Ref	Measurements	XS	S	M	L	XL	2X	3X	4X	5X
A	Front Chest: The width at the chest, measure from underarm point to underarm point across the front.									
		21.3	22.2	23.2	24.5	25.8	27.1	28.4	29.7	31.0
B	Front Length: The vertical length of the garment, starting from the highest shoulder point, to the bottom of the hem.									
		27.4	28.3	29.1	30.0	30.9	31.7	32.6	33.5	34.3
C	Across shoulder: The distance between the shoulder seams measured straight across the front.									
		21	21.5	22	22.6	23.4	24.2	25.2	26.2	27.2
D	Sleeve length: The total length from the shoulder seam to the end of the sleeve									
		8.5	8.8	9.1	9.1	9.3	9.7	10.1	10.5	10.9

## Centimeters

Ref	Measurements	XS	S	M	L	XL	2X	3X	4X	5X
A	Front Chest: The width at the chest, measure from underarm point to underarm point across the front.									
		54	56.5	59	62.3	65.6	68.9	72.2	75.5	78.8
B	Front Length: The vertical length of the garment, starting from the highest shoulder point, to the bottom of the hem.									
		69.6	71.8	74	76.2	78.4	80.6	82.8	85	87.2
C	Across shoulder: The distance between the shoulder seams measured straight across the front.									
		53.4	54.7	56	57.5	59.5	61.5	64	66.5	69
D	Sleeve length: The total length from the shoulder seam to the end of the sleeve									
		21.6	22.3	23	23	23.7	24.7	25.7	26.7	27.7

# Hoodie Sizing Chart



Inches

Ref	Measurements	XS	S	M	L	XL	2X	3X	4X	5X
A	Front Chest: The width at the chest, measure from underarm point to underarm point across the front.									
		20.5	21.5	22.4	23.4	24.4	25.4	27.4	27.4	28.3
B	Front Length: The vertical length of the garment, starting from the highest shoulder point, to the bottom of the hem.									
		26.4	27.2	28.0	28.7	29.5	30.3	31.9	31.9	32.7
C	Across shoulder: The distance between the shoulder seams measured straight across the front.									
		24.0	24.4	24.8	25.2	25.6	26.0	26.4	26.8	27.2
D	Sleeve length: The total length from the shoulder seam to the start of the cuff.									
		26.1	26.4	26.7	27.0	27.2	27.5	27.9	28.3	28.7

Centimeters

Ref	Measurements	XS	S	M	L	XL	2X	3X	4X	5X
A	Front Chest: The width at the chest, measure from underarm point to underarm point across the front.									
		52	54.5	57	59.5	62	64.5	67	69.5	72
B	Front Length: The vertical length of the garment, starting from the highest shoulder point, to the bottom of the hem.									
		67	69	71	73	75	77	79	81	83
C	Across shoulder: The distance between the shoulder seams measured straight across the front.									
		61	62	63	64	65	66	67	68	69
D	Sleeve length: The total length from the shoulder seam to the start of the cuff.									
		66.4	67.1	67.8	68.5	69.2	69.9	70.9	71.9	72.9